

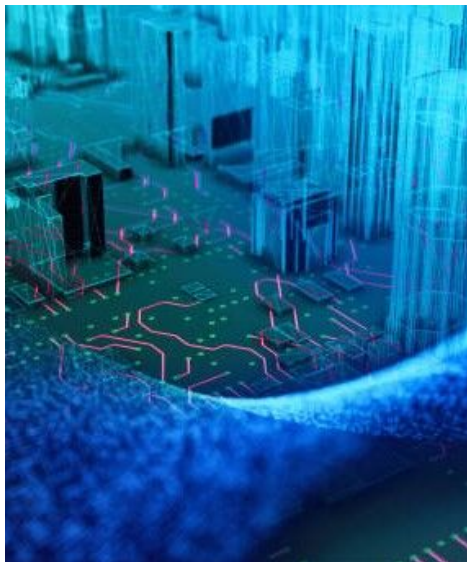
## FAIRiCUBE Newsletter#3



### Project status meeting in Wageningen

The FAIRiCUBE project team recently gathered in Wageningen for their second status meeting this year, hosted by Wageningen Environmental Research (WUR). There was a clear focus on the planning of the final year of the FAIRiCUBE project and on upscaling and business strategies of FAIRiCUBE Hub services and the FAIRiCUBE use cases.

[Read more](#)



## WUR Geoscripting students invited to tackle FAIRiCUBE Geospatial challenges

In today's data-driven world, geospatial analysis plays a crucial role in addressing urban and environmental challenges. In October students from Wageningen University & Research (WUR), enrolled in the Geoscripting course are invited to dive into cutting-edge geospatial problems linked to FAIRiCUBE.

[Read more](#)



AD4GD

USAGE  
Urban Data Space  
for Green Deal

FAIRICUBE



Luxembourg city signed a  
letter of commitment with  
space4environment !

GDDS Sibling Projects  
Collaborate on Metadata

We are excited to share that the city of Luxembourg has officially signed a letter of agreement to collaborate with space4environment as part of their work in Use Case 1. This partnership will focus on their work on the mapping and management of invasive alien plant species (neophytes) within the city's borders.

[Read more](#)

The four "Sister Projects" AD4GD, FAIRiCUBE, USAGE and B-Cubed, joined forces to exchange and discuss meta data concepts and implementation used in each project. This will provide a common understanding of the meta data requirements to the GDDS and result in joint policy brief.

[Read more](#)

## Exploring New Horizons in Upscaling

The FAIRiCUBE project is all about pushing the boundaries of data innovation. As we continue to grow and evolve, it's essential to explore new domains and tap into previously uncharted areas.

[Read more](#)



Funded by  
the European Union



[| Contact](#) | [Disclaimer](#) | [Privacy](#) | [Unsubscribe](#) |